



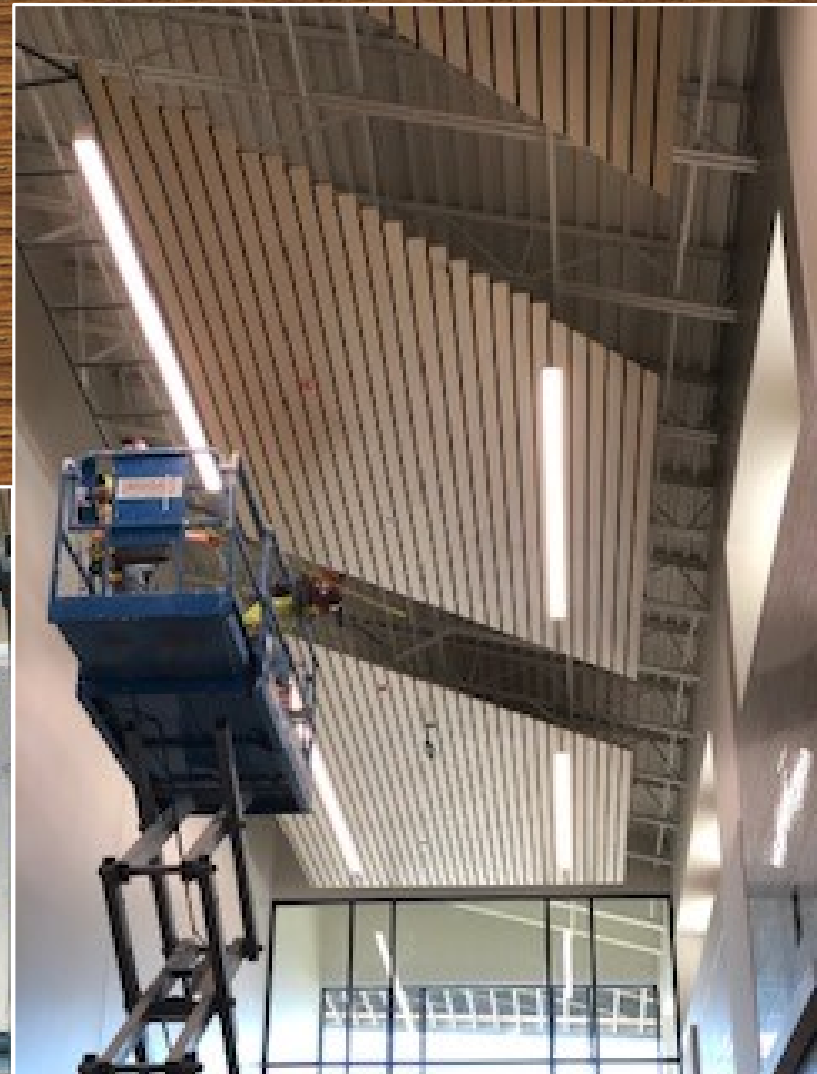
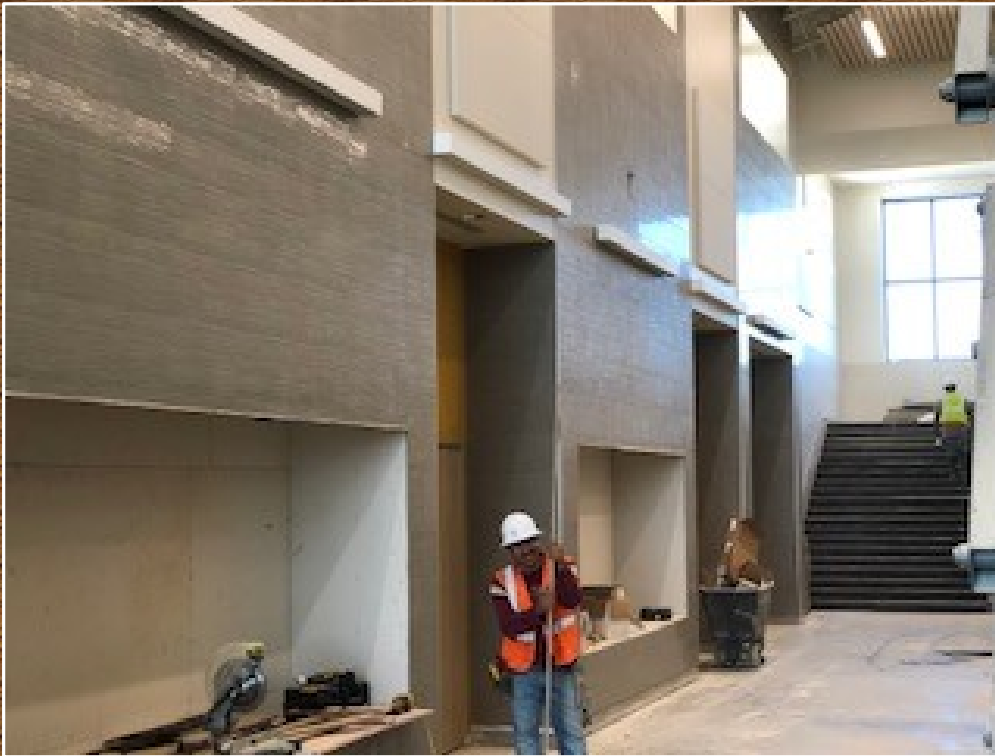
COPPER CREEK ES



Front entrance

Interior Updates

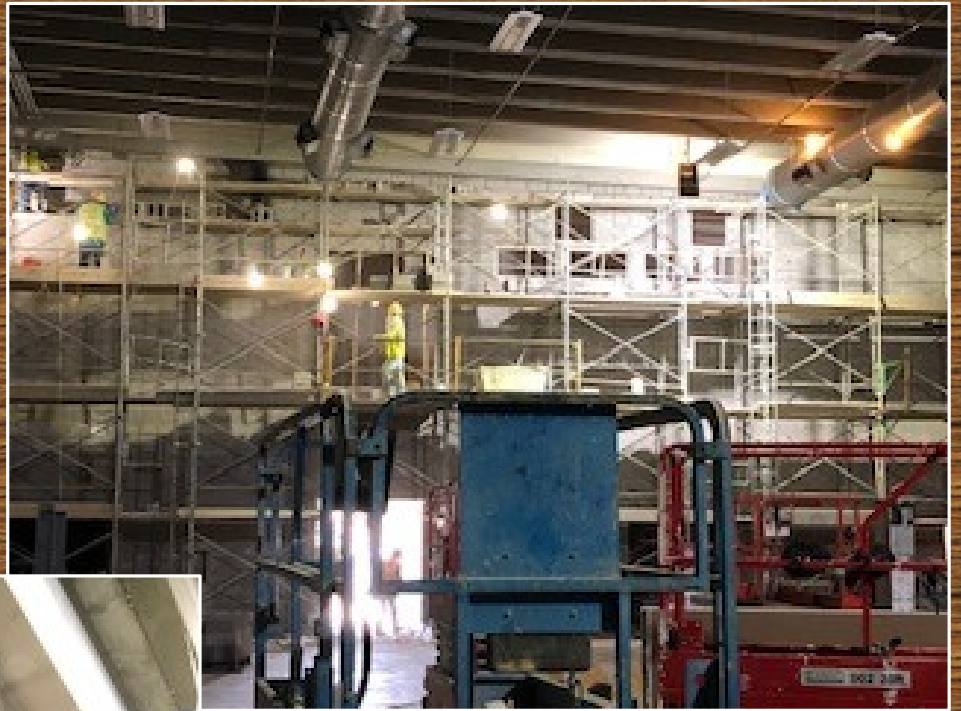
Main lobby and finishes



Ceiling clouds

Copper Creek ES

Masonry wall within the
tornado structure



Duct work and
lighting

Gym



**Gym masonry
progressing**

Sidewalks

Sidewalks progressing between the
academic wings



Playground

Playground system installed



Boswell HS

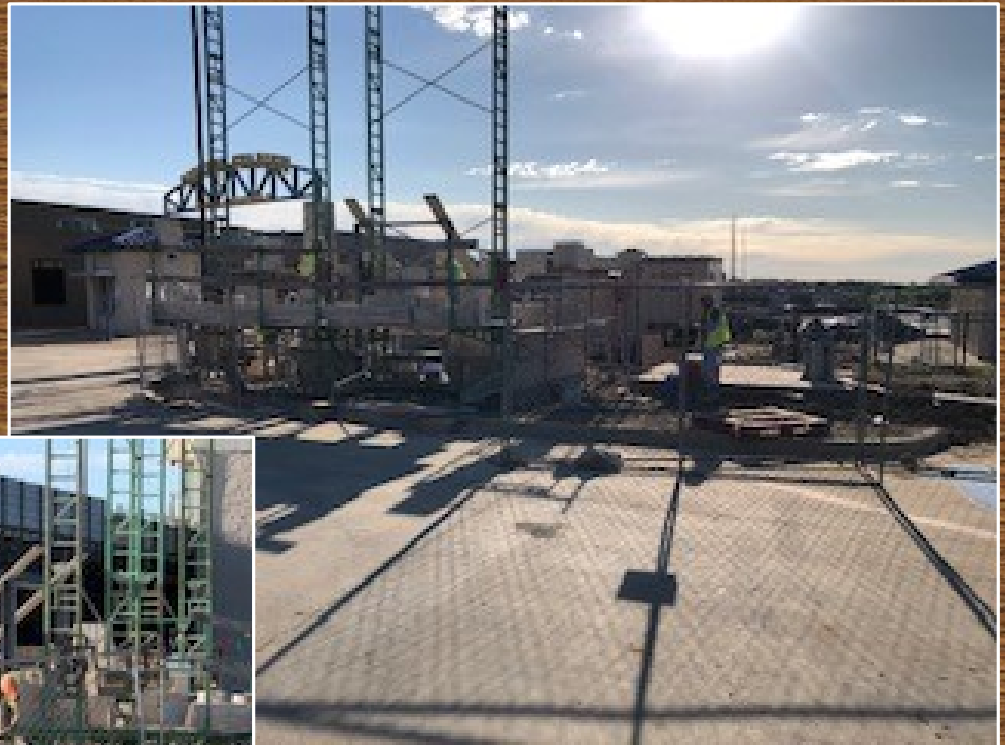


**Agriculture-Science building
concrete masonry blocks
progressing**



Boswell HS

**New mechanical building
progressing**



Turf Installation

Highland MS,
Creekview MS, and
Ed Willkie MS



Grading and soil
preparation
progressing



Turf Installation

**Chisholm Trail HS and
Prairie Vista MS**



Sites are mobilized

Turf Installation

Saginaw HS



Moisture conditioning
continues

TRACK RESURFACING



Saginaw HS and Chisholm Trail HS completed, finalizing punch list. Boswell HS structural spray completed, stripping in progress.

Different phases of Saginaw HS are pictured

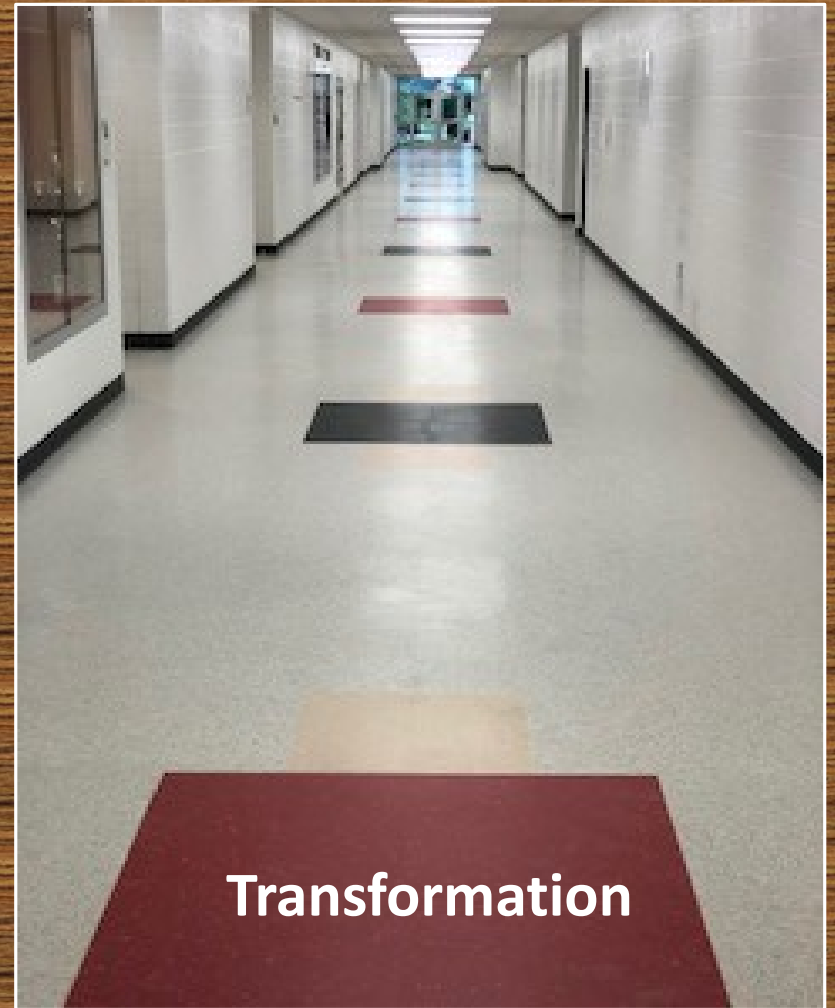


FLOORING PROJECTS

Saginaw HS



Before



Transformation

FLOORING PROJECTS



New classroom
carpet and
hallway VCT

Prairie Vista MS



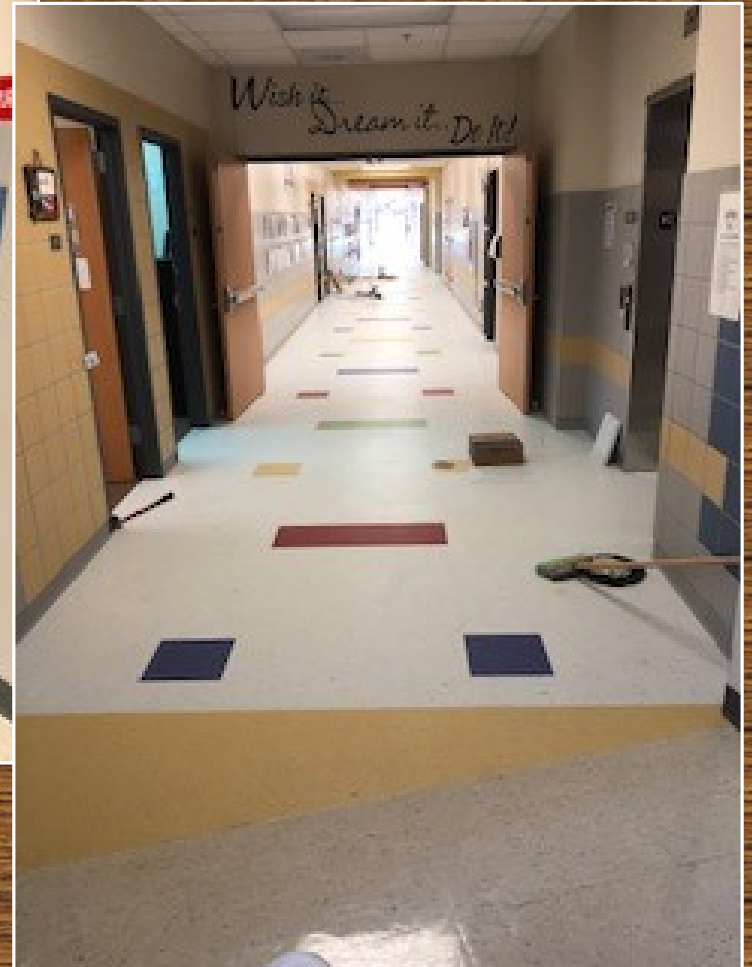
Flooring Projects

Comanche Springs



Carpet to be removed

Finished product



PROGRESS UPDATE OF OTHER PROJECTS

- **Maintenance Addition and Multiple Security Projects** – Procurement method is being recommended as an action item. Design development complete. Construction documents to be completed late May. As a reminder, this is a consolidation and streamlining of warehouse services.
- **Network Operations Center (NOC)** – Design and ordering of materials in progress. Records storage has been relocated. Completion date August 2020.
- **Tennis Court Resurfacing and Wind Slats** – Saginaw HS, Prairie Vista MS, and Ed Willkie MS waiting on materials.
- **Central Office** – Continue design meetings. Projected construction will begin in Fall 2020.
- **Eagle Mountain HS** – Continue to have meetings with VLK and Civil Engineers. Preliminary Development Review Committee with City of Fort Worth for site and city concerns, recommendations, and requirements.